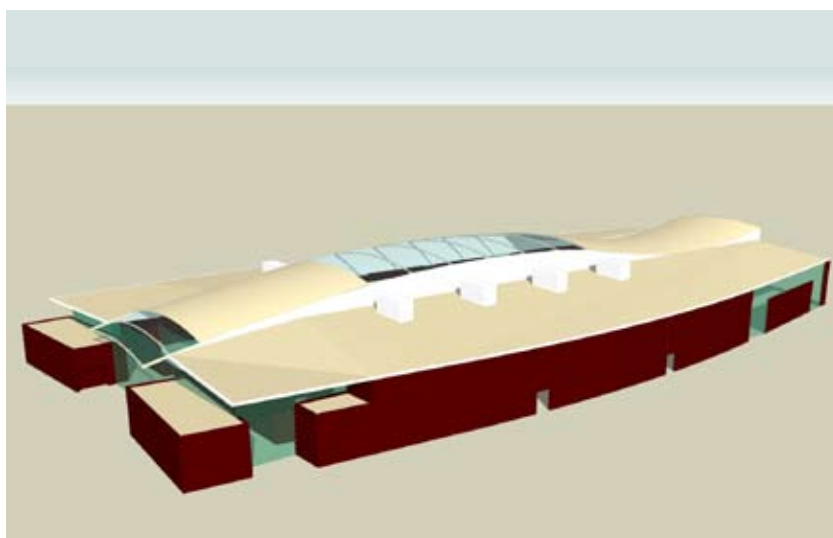
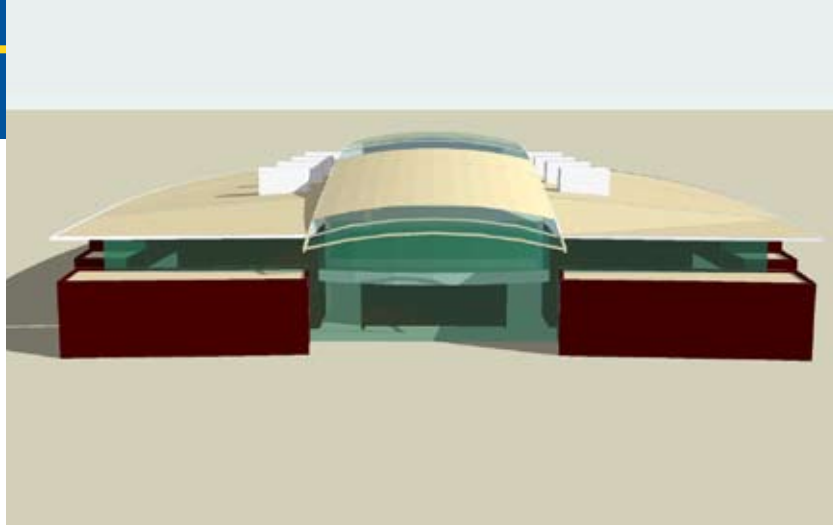


Richard O. Jacobson Exhibition Center

The Richard O. Jacobson Exhibition Center will be a state-of-the-art multi-use facility debuting at the 2010 Iowa State Fair. The fully climatized indoor arena will offer the versatility to host events ranging from livestock shows and exhibits to intimate concerts.

The facility is part of a \$20 million project that will feature covered access to the Horse Barn and complements the Fairgrounds' current livestock facilities, including approximately 1800 stalls, a 19,000 square foot covered arena and the 47,000 square-foot climatized Livestock Pavilion.



Dimensions:

Arena floor: 250' x 125'
Indoor warm-up arena: 140' x 80'

Square Feet: 110,000 total

Seating: 3,000-4,000

Ceiling Height: Varies, 30' to 50'

Service Entrance: 20' x 20'

Heating and Air Conditioning:

Entire building

Restrooms: Access from interior or exterior (ADA accessible)

Additional Features: Two first floor meeting rooms, multiple concession locations, second floor VIP seating, mezzanine storage, loading dock, concrete floor, adjacent hard-surface parking